

Herts
Hash
House
Harriers
Herts official Website: hertsHash.co.uk

Hotel workers after changing the bed sheets on Feb 15th:



Run No. 2201
Date: Sunday 15th February 2026
Venue: The Fox & Hounds
Location: Croxley Green
Beers/Cider: GK Abbot; IPA
Hare/s: Moss Key Toe
Runners: 10
Virgins: 2
Visitors: 0
Newies: 0
Après: 0
Hash Hounds: 1
Total: 13
Membership: On the Three Rivers Umbrellas Trail



The Hare had his fingers crossed that the dry weather would hold out for the Hash. At 06:15Hrs, upon rising, the Hare saw that the ground was dry with no overnight rain. Borrowing No Eye Dear's expression, it looks all 'good and dandy' so far for today's trail.

Out to complete today's Trail markings of the short cut to finish, it then started, a few drops for the first hour, then gradually increasing to a drizzle. The Hare thought that he better put down more Trail-flour because chalk markings won't survive even a drizzle for long. However, the drizzle had now turned to light rain and continued throughout the early morning, and for the entire duration of the Hash.

The Trail would include some roads, footpaths, the old John Dickinson Factory wharf on The Grand Union Canal, The Carp Ponds within Croxley Business Park, Croxley Common Moor, The Ebury Way, The river Gade and Croxley Hall Woods

The Pack began to assemble in the Hare & Hounds Pub, who graciously allowed us to deposit our bags and where the Circle was called. There were a few notable absentees this week, with some at the Friday 13th-Bull Moon Tenth Anniversary Weekend, there were some who were very injured, others still lurgied-up, plus the usual Sick-note.

Briefed by the Hare on what to expect out on the now damp Trail, the Pack were informed that the original Trail was to be just over 5.25 miles, 3 miles for the shortcut. Due to the rain, the first setting of the Trail was shortened to 3.75 miles and the shortcut discarded.

The new full Trail would take about an hour and a half to complete, mainly because of the rain obliterating much of the Trail markings. So, the hashers formed one group and tried to keep together for the entire trail with two held checks to support this.

Brollies were up as the Hash, headed by Tent Packer, Milf, Juices Flowing, and the Hare, got underway. The first group were followed by Kylie and Parsons Nose, and bringing up the rear Diamond Geezer, Toni and the dog, Alfie who had to stop to lay eggs.

Proceeding along New Road in an eastward direction for 200 yards to Croxley Metropolitan Line Station, where sensible people were sheltering from the rain under the Station's prominent covered frontage. Opened in 1925 as "Croxley Green" on the Metropolitan Railway's extension, however, the name led to confusion as there was another Croxley Green opened by the London & North Western Railway's on their Lord Ebury's Railway branch-line in 1912 which ran to the south, so the Metropolitan Line dropped the "Green" part of the name in 1949.

As for the LNWR Croxley green Station, on the 9th March 1913 a group of Ladies, traveling through Croxley Green enquired where the Station was? The Ladies were given directions from a courteous PC Hagger. On Monday 10th March an incendiary device completely destroyed the Station, it is believed the women were Suffragettes who



Love is in the air.
But so is the flu.
Wash your hands.

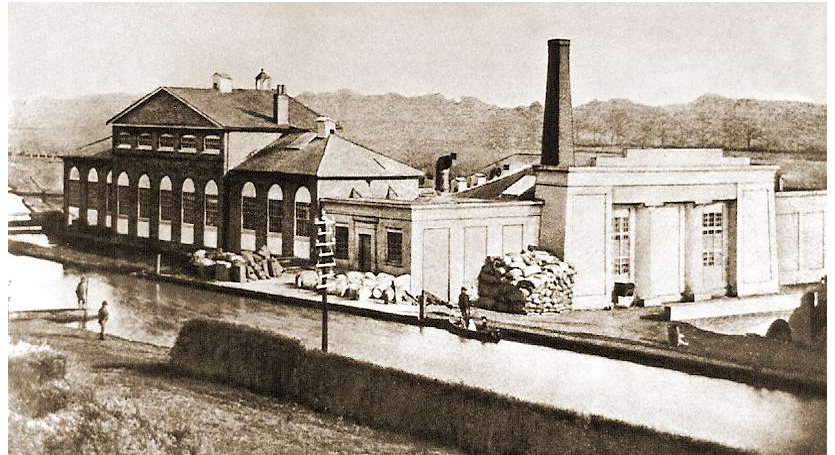
destroyed the Station! The remains of which can be seen in the picture to the right...

It was a shame that My Lil' was away today, for having crossed the Rickmansworth Road and followed Trail for 100yds towards Watford before the first Check was found, none of that 'Check Points outside of the Pubs malarky' that freak him out.

The Pack awaited the arrival of stragglers before moving on southwards for 400yds, a steepish downhill along Mill Lane, passing Weston Woods on the right-hand side and turning south-westwards, to reach a checkpoint prior to crossing the Grand Union Canal over the Bridge at Common Moor Lock (79).

The Trail was on nice flat ground from this point until Croxley Hall Farm, another Checkpoint was originally marked and turning eastwards along a footpath alongside the GUC on what was the old John Dickinson Croxley Paper Mills wharf, where 'Croxley Dashers' would compete to use their boats to supply the Mill with its Egyptian Façade with (Egyptian) Esparto Grass from the London Docks before the railways took over.

By the 1960 there were Six paper making machines based there, Machine No.4 built in 1881 was still capable of making 50 Tons of paper a week. The former paper Makers site, closed in December 1980, is now the Bywaters Housing Estate, the Trail continued for 500 yds to the next Checkpoint where the path meets Bywaters again, at the opposite end.



On by the Croxley waterfall, a cascade where the River Gade drains from the Grand Union Canal, to continue north-eastwards along Blackmoor lane to the northeast for 400 yds before turning south-eastward to one of the roundabouts within the industrial area.

South-eastwards along Hatters Lane for 400 yds to the first Held Check on Hatters Lane, opposite the carp ponds behind the Fitness Centre, where common Carp (unaffected by the rain) up to 20lbs were viewed from the narrow footbridge.



Lord Ebury

The Pack tucked into Liquorice Allsorts at the regroup. Toni and Alfie acted as unofficial guides on this Tour as being locals, were familiar with the area and frequently walk this route. The Trail resumed eastwards along Hatters Lane, passing Smith & Nephew (The Hare's old employer) before turning south for 100yds.

Back to head east again through the kissing gate and onto The Common Moor, south along the footpath for 400 yds over the slippery Shiggy of the waterlogged southwest corner of the Common Moor. Through another pedestrian gate and turning eastwards onto a footpath alongside Dwight Road becoming The Ebury Way.

The Ebury Way was the former route of the LNWR railway, often called 'Lord Ebury's Railway' after his desire to link the railways, the single-track route opened in 1862, connecting Watford Junction to Rickmansworth Church Street, electrified in 1914, it was never really successful, or profitable, passenger service ceased in 1952, with goods continuing to supply Croxley Paper Mills until 1967 when it was shut.

The route kept with the former Railway track for 1800 yds, passing through the boxed-in bridge with the Metropolitan Line above, around 400 Yards down the tracks from the split in the Rickmansworth or Croxley & Watford options.

After a chance to admire the mural of George Michael on the graffitied concrete walls, the Trail continued along the Ebury Way where the Pack could ponder on the sight of a tree near to the Thurlow Lakes, was this n 'Artwork' or vandalism?

With a variety of Shoes, boots, pullies & pans all strung up from one branch over the route.

On to the second Held Check on the bridge over the Grand Union Canal. Brollies were handy as the first group of Milf, Juices Flowing, Tent Packer, Diamond Geezer, Toni & Alfie, with the Hare awaiting for the excited Train-spotting Kylie and Parsons Nose to catch up. More Liquorice Allsorts and gummy fruits were consumed here.

Having regrouped, the Hash descended from the bridge onto the canal Towpath and proceeded north-eastwards 200yds to Lot Mead Lock (80) after which the Pack turned northwest and following the trail along a footpath Towards Croxley Hall Farm. Northward on to the farm drive to cross over the Amersham branch of the Metropolitan Line and onto Croxley Hall Farm Road.

From here there was a very slight gradient flattening out on reaching Harvey Road. At the junction with All Saints Road [Not named after the girl group! – Ed] the group proceeded eastwards for 800 yds, crossing both of the Metropolitan Line Watford spurs below, this road becomes a pathway as it turns north by northeast through Croxley Hall Wood, where work is underway to improve the woodland, before it joins onto urban back streets of Harvey Road at its crossroads with Imperial Way.

Turning north for 500yds on Harvey Road, with one final crossing of the Watford branch-line one last time, before reaching the T junction with, then crossing the Rickmansworth Road. Eastwards for a mere 50yds and then north again for 200 yards around Dickinson Square, an area of semi and detached homes straight out of Sir John Betjemen's Metro-land, turning west 50yds and then another quick turn, this time on a 100 yds north onto New Road.

IMPORTANT NOTICE (Yes, a serious Bit)

Some of you may be not be aware of the Countryside 'Livestock Amendments Act 2025' (England & Wales) which **comes in to Law on 18th March 2026 regarding Dogs on or off of the lead,**

Other Hash House Harriers have already **changed** their 'Disclaimers' and we have altered ours to suit, since **fin**es have been increased from **£1,000 to Unlimited Fines**, it also can include Imprisonment.

We are not banning dogs on the Hash, we are just making sure that **if any claim/s should arise**, then **they will directed at the owners of the dog/s** and not the Herts Hash House Harriers (as a group)

We, as a group, must also be aware that the Act introduces a new defence for dog owners to exempt them from liability where the dog was in the charge of another person at the time of the offence without the owner's consent, for instance if the dog was stolen.

The Act will now cover 'paths and roads' and not just farmland/open spaces

A dog now does not need to make physical contact with animals to commit an offence under the new law. Chasing or disturbing livestock can cause harm.

The Police also have new powers of investigation

Farmers and the Police still have the legal right to destroy any dogs caught worrying animals

Definitions

"Worrying" means: attacking livestock, or chasing livestock in such a way as may reasonably be expected to cause injury or suffering to the livestock or, in the case of females, abortion, or loss of or diminution in their produce; or **being at large (that is to say not on a lead or otherwise under close control)** in a field or enclosure in which there are sheep.

"Livestock" means cattle, sheep, goats, swine, horses, camelids, ostriches, farmed deer, enclosed game birds or poultry.

"Cattle" means bulls, cows, oxen, buffalo, heifers or calves

"Horses" includes donkeys and mules

"Farmed deer" means deer of any species which are on agricultural land enclosed by a deer-proof barrier and kept by way of business for the primary purpose of meat production,

"Enclosed game birds" means any pheasant, partridge, grouse (or moor game), black (or heath) game or ptarmigan that are being kept enclosed prior to their release for sporting purposes

"Poultry" means domestic fowls, turkeys, geese or ducks.

This will also give us better cover, as a group, for anyone tripped up by off of the lead dogs.

Westwards for 150 yds to the Hare & Hounds. It was remarked how flat the trail was and how different it was from the previous Hash where we had the steep climb up Scotts Hill, some recalled at which point the red socks wearing Milf streaked ahead never to be caught again (This reminds me of those other red socks wearing front runner, World Champion X-Country Runner and World record holder for 10,000m in the early 70s Dave Bedford)

I do digress, so climbing the stairs (the only real uphill section on the Hash) to our own area within the Hare & Hounds, the group was assembled. A toast to the Hash, a Down-Downs for the Hare and Toni, our virgin hasher were dispatched by Tent Packer. Hot 'N' Spicce and KP joined the Hash at The Hare and Hounds, which does do a good Sunday lunch and ordered by the Gourmet Section of the Pack.

[Meanwhile in Lichfield, Paxo, My Lil' & Mr X were 'kidnapped' by a Guernsey Harriette & forced to Drink Church End Irish Coffee Stout before escaping! Poor My Lil' was still I shock after bragging he got the last round the night before & it was Mr X's round next, forgetting the meeting point was the local 'Spoons where Mr X strolled up to the Bar, offered some CAMRA vouchers & got three Pints for £7.97! – Ed]

Moss key Toe



Roses are red
Violets are blue...



UK news

Every screen tested in McDonalds has traces of poo

Metro UK has tested the customer touch screens in eight McDonalds restaurants in the UK. They found traces of faecal bacteria found in poo on every screen as well as a host of other bacteria.